

Company Overview

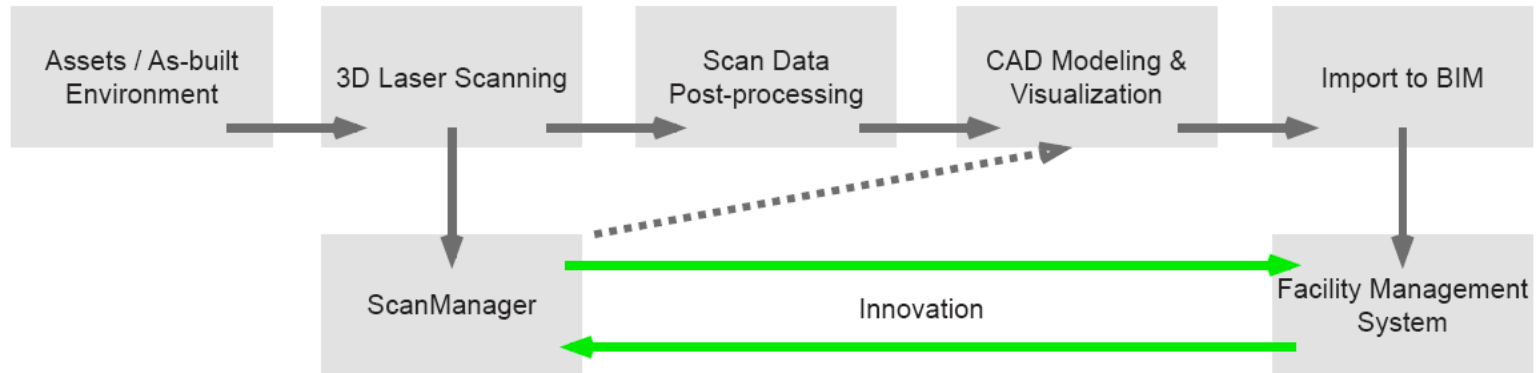
iQsoftlab Ltd is a Munich-based software developer for 3D laser scanning. The core product of iQsoftlab is the ScanManager: a high-performance, practice-oriented tool for viewing, analyzing and managing 3D laser scans. Our SDK provides interoperability solutions for a wide range of applications, which enables the seamless integration of laser scanning with CAD modeling, facility management (FM), and other technologies. The high-performance motivation and the profound expertise of the company team are devoted to leading developments. The innovative concept of 3D scan data integration with physical asset management systems by means of the ScanManager Software is protected by a patent application.

In harmony with the company's business philosophy, we provide individually customized software solutions for the total user satisfaction. Our custom-tailored solutions meet the needs for specific scan data management of clients from different industries in order to increase the efficiency of their 3D laser scan data utilization.

The profound expertise of iQsoftlab in the area of 3D remote sensing and CAD technologies is based on numerous 3D laser scanning and 3D CAD modeling projects, executed together with 3D Scanline. 3D Scanline is an engineering office, based in Munich, Germany. Its architects and engineers have focused their activities on 3D laser scanning and CAD modelling of industrial plants, airports and other large-scale facilities and infrastructures since 2003. The joint team enjoys respectable acknowledgement from companies worldwide: Daimler AG, EDAG GmbH & Co. KGaA, Fraport AG, KUKA Systems GmbH, ThyssenKrupp Drauz Nothelfer GmbH, Toshiba Corp., VDL Steelweld BV, TMS GmbH, etc.



ScanManager White Paper



3D Laser Scanning of Capital Assets

Main reasons for the integration of ScanManager (SM) with Facility Management (FM) systems:

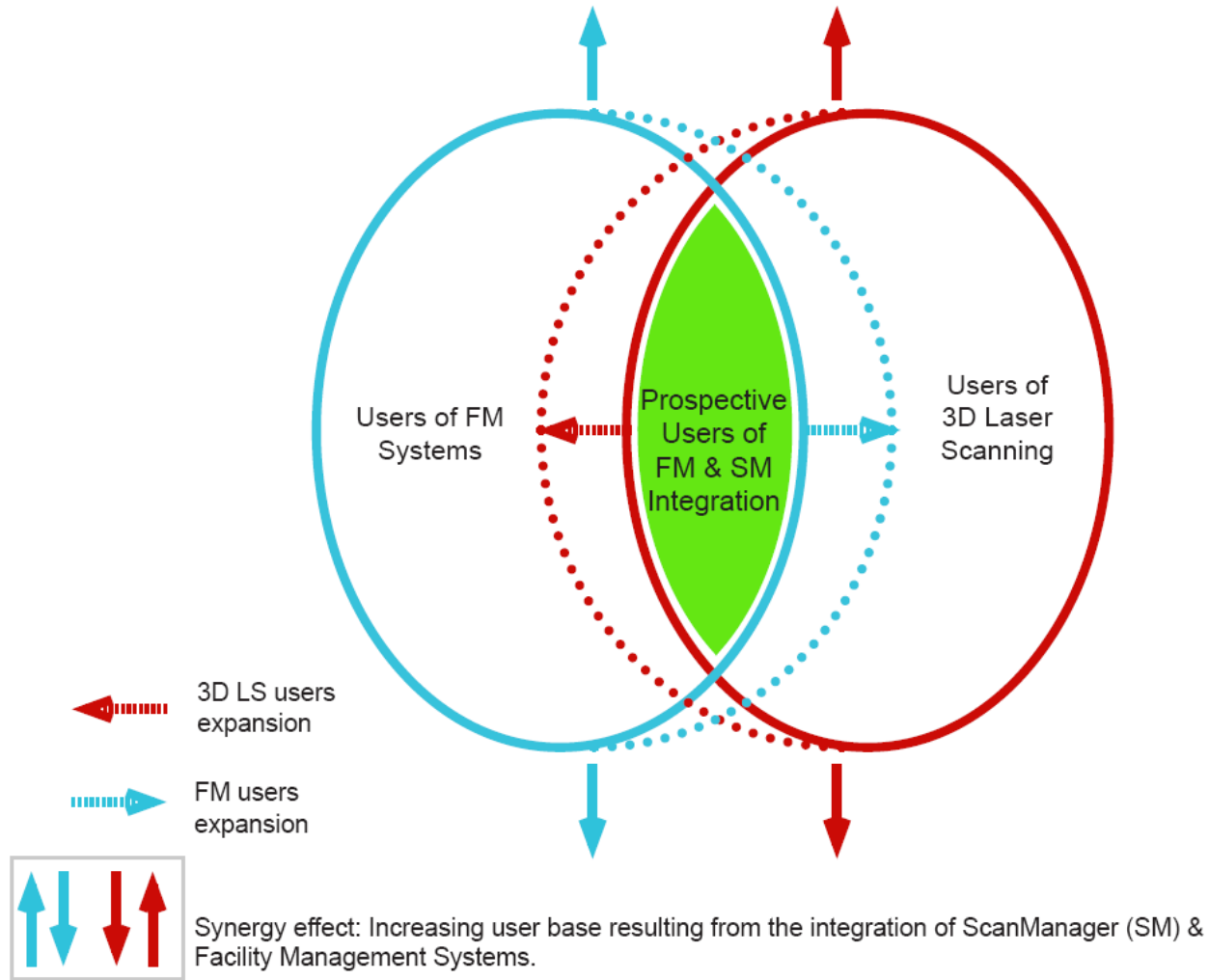
- connecting asset's FM entry to asset's location in the 3D laser scan database;
 - user-friendly web-alike graphical user interface;
- authentic 3D imaging (as opposed to idealized CAD models);
 - ability for 3D visualization and spatial analysis;
- virtual reality control during entire asset's life cycle

Facility Management of Capital Assets

Additional benefits to users of iQsoftlab's SM-FM solution:

- enhanced accuracy and efficiency of documenting existing capital assets;
 - reduced costs and increased efficiency of engineering efforts;
- integration of 3D laser scans into procurements documentations
 - increased precision in engineering and construction bids;
 - ability for e-commerce integration;
 - efficient creation and execution of maintenance orders;
 - improved capital planning;
 - optimized repair and preventive maintenance;
 - improved space and move management;
 - better risk and feasibility assessment;
 - reduced planning mistakes;
- improved responsiveness to project changes;
 - improved quality control;
- better safety planning and emergency response;
 - reduced failure downtime;

Users Expansion Effect of ScanManager Innovation



GSA

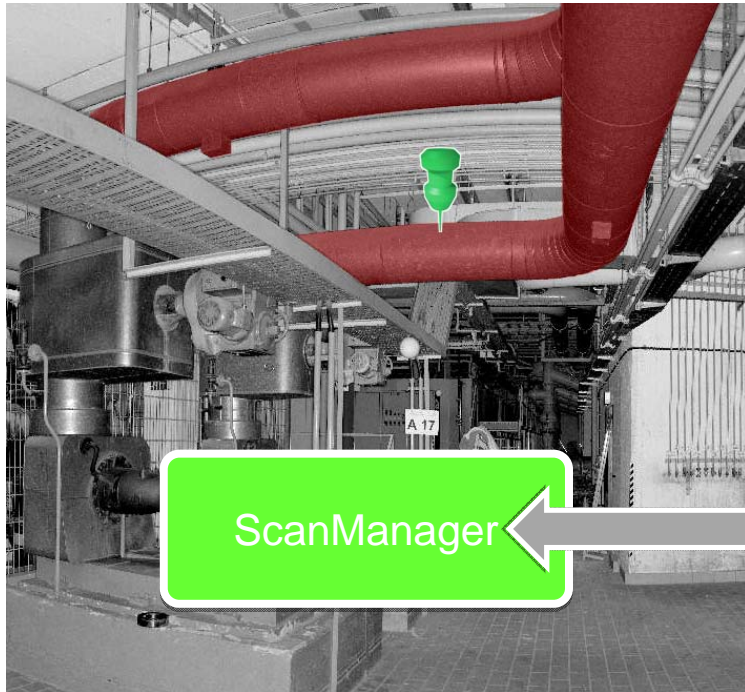
Since 2003 numerous 3D laser scanning projects.
Hundreds of Millions USD invested in 3D laser scanning programmes.

Millions of 3D laser scans existing.
Abundance of 3D laser scan data, used only for CAD modelling / BIM

What do we do with the millions of scans lying on the shelves?
Do we want to throw away precious and costly 3D laser scans?
How to fully utilize existing terabytes of 3D laser scan data?

The ScanManager software solution:
Integration of your 3D laser scans with your Facility Management system.

ScanManager Advantages:
- easy and intuitive to work with, like a simple web browser;
- compatible with various common scan file formats

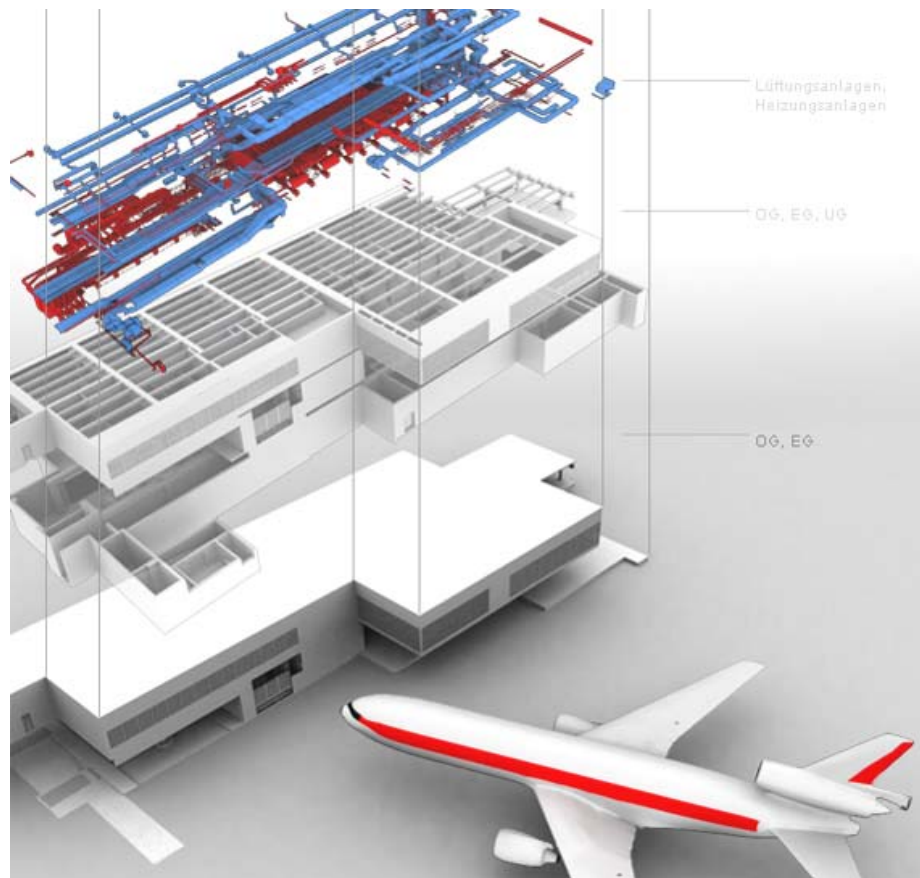


Integrating the ScanManager with the Facility Management System of Daimler Gaggenau.

Patent application submitted.



Projects



Airport Frankfurt am Main, Germany

2006 – Gate C6

- Laser Scanning + CAD Modeling
- 4,290 m² (46,177 square foot)

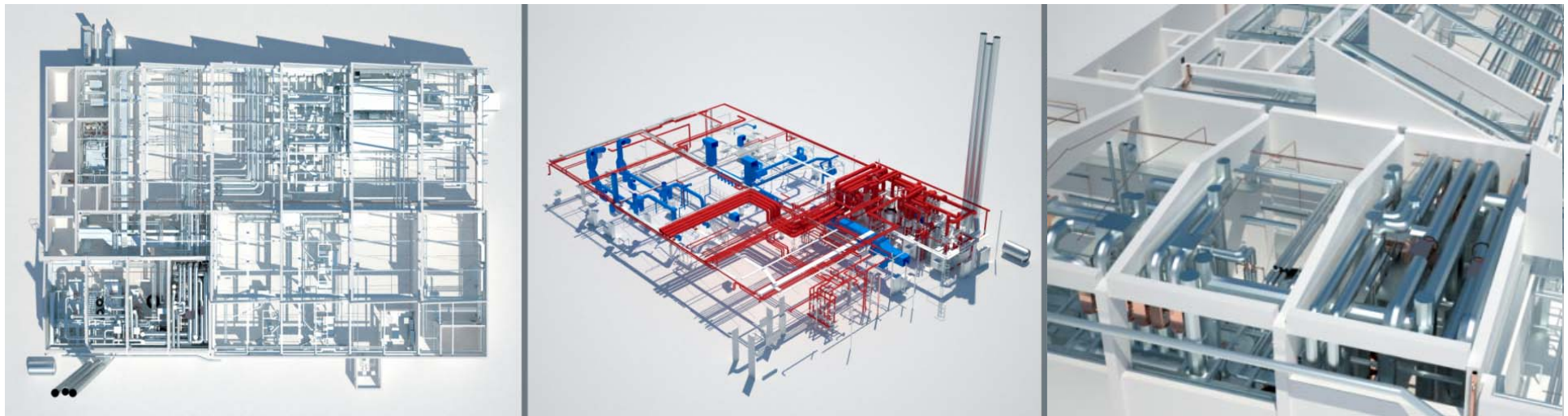
2008, 2009 – Gate B

- Laser Scanning + Construction process documentation
- 20,000 m² (215,278 square foot)

Mann+Hummel, Marklkofen, Germany

2003, 2005, 2008

- Laser Scanning / Rescanning + CAD Modeling
- 24 Productions Halls und Depots



The integration of the ScanManager software with FM systems is a pioneering contribution to the advanced applications of 3D laser scan data. Our goal has been to dig the scans out of the forgotten archives and make their valuable information easily accessible via connections between CAD solutions, FM systems, and the ScanManager software. Scan Manager is user-friendly thanks to its intuitive web-browser interface.



iQsoftlab GmbH
Ringseisstr. 11A
D-80337 München

Tel +49 89 548 916 01
Fax +49 89 548 923 30

www.iqsoftlab.com